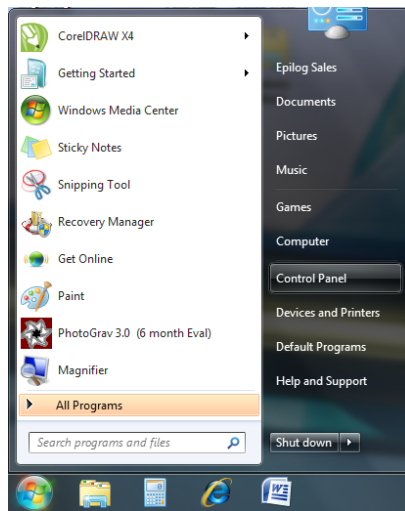


## Windows 7:

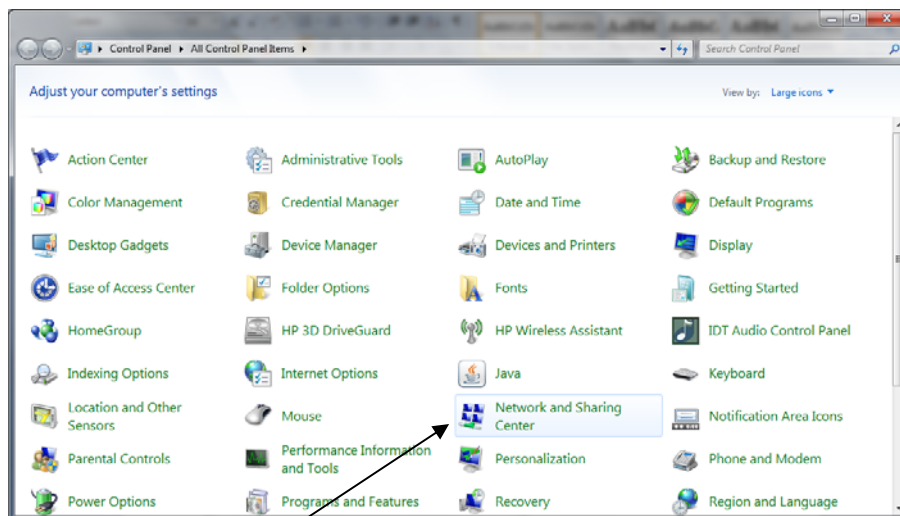
### *Setting up the TCP/IP Address in the Computer*

Windows 7 uses a slightly different, but very similar protocol than previous versions of Windows to install the TCP/IP address in your computer. These instructions will guide you through the Windows 7 protocol.

Once you have set the IP Address at the laser, you will need to set the TCP/IP address on your PC.

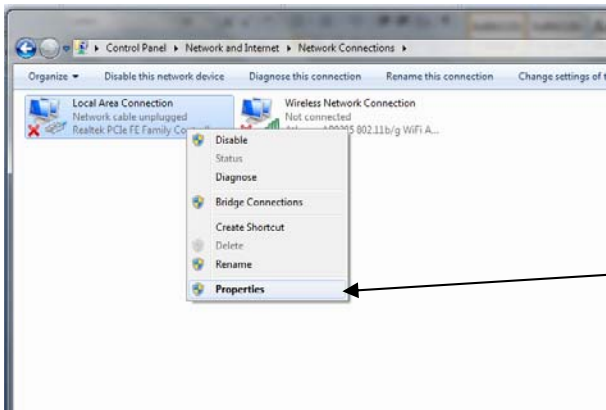
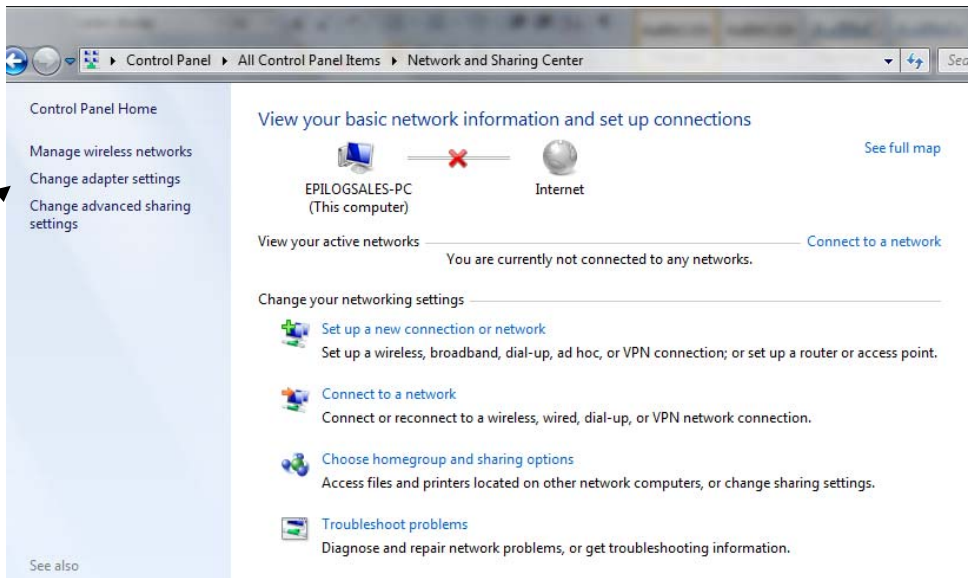


From the Start menu at the bottom left corner of your PC monitor, select **Control Panel**

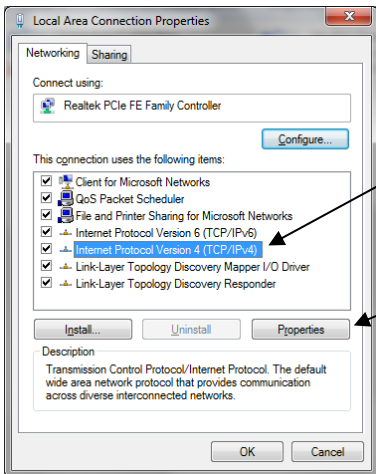


Click on **Network and Sharing Center**

Click on **Change adapter settings**



Select the **Local Area Connection** option and then right click on **Properties**



Highlight **Internet Protocol Version 4 (TCP/IP)** and then click on **Properties**

Select *Use the following IP address:*

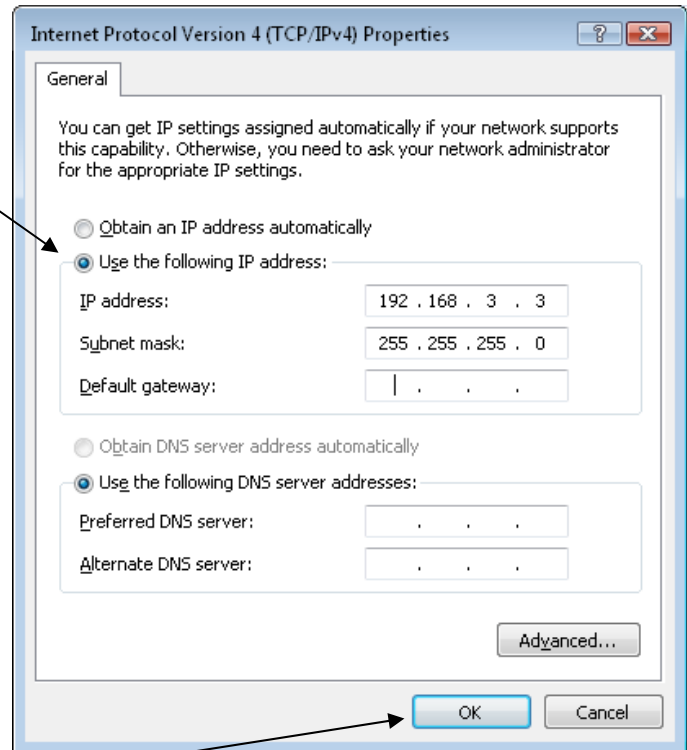
Type in the following IP Address and Subnet mask:

192.168.3.3

255.255.255.0

You can leave the Default gateway blank.

This number is not an error; the last digit of the IP address in this window must be different than the IP address set in your laser system.



Click the **OK** button in this window and then click on the **Close** button in the next window.

***That's it!*** The IP Address in your computer is set. Your computer will be able to talk to your laser after you install the print driver (which is the next step).